

World Children's Day



On Wednesday, pupils showed their support for Unicef's World Children's Day by wearing something blue to school. Lots of families kindly made a donation to Unicef, the United Nations agency for children, which works to protect the rights of every child, especially the most disadvantaged and those hardest to reach



Convention on the Rights of the Child
Article 3: Best Interests of the Child



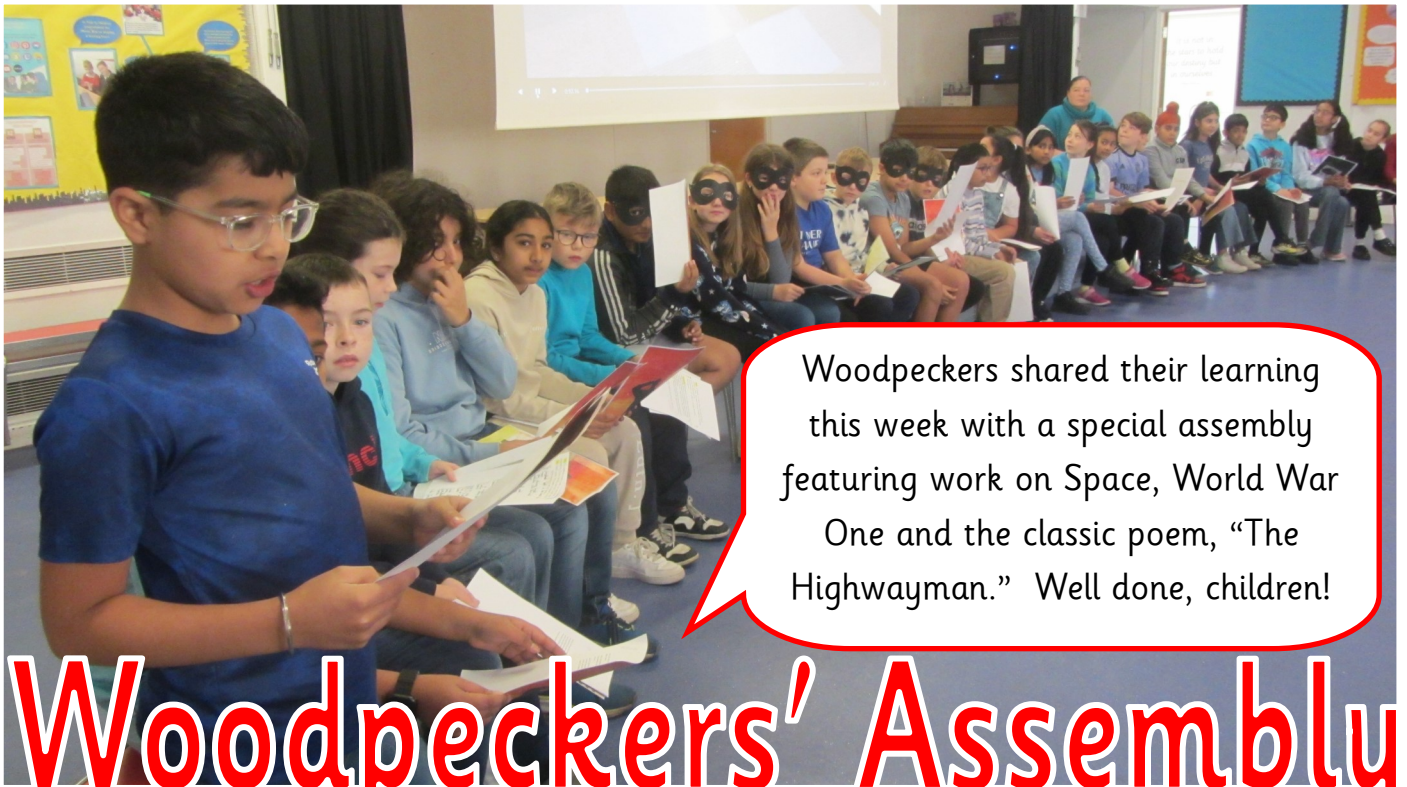


World Children's Day is UNICEF's annual day of action for children, by children, marking the adoption of the Convention on the Rights of the Child on 20th November 1989 .

In school, pupils learnt about The Rights of the Child and thought about local and global issues that are important to them. Each class also took delivery of its Unicef, Paddington Bear advent calendar. All proceeds from the sale of the calendars goes to support the vital work of Unicef.

World Children's Day



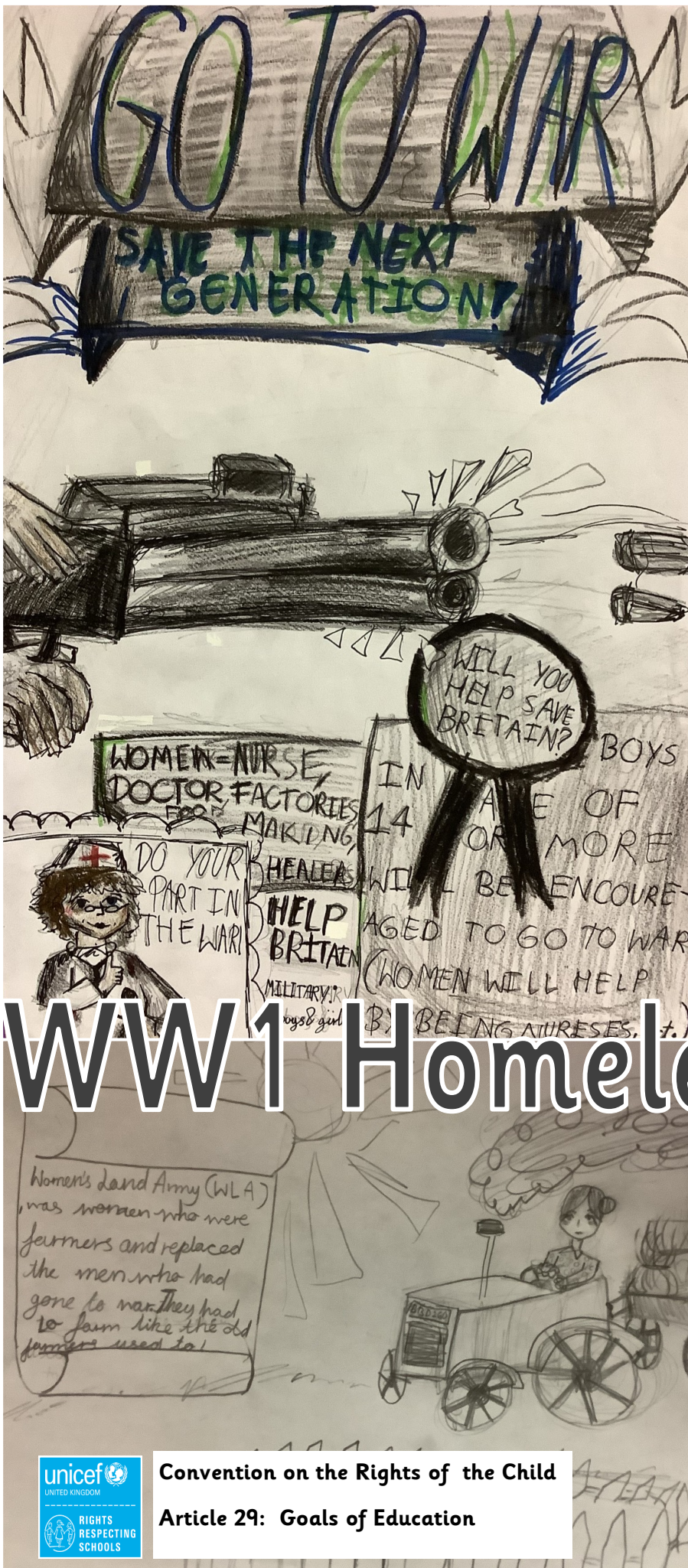


Woodpeckers shared their learning this week with a special assembly featuring work on Space, World War One and the classic poem, "The Highwayman." Well done, children!

Woodpeckers' Assembly



Convention on the Rights of the Child
Article 29: Goals of Education



WW1 Homelearning

Year Five are enjoying their new History topic, “Fallen Fields” which is all about the First World War. For homelearning, pupils researched a topic of interest connected to the war and produced posters in response.

In class, the children have learnt about the causes of the conflict and the government’s recruitment drive which led to thousands of young men signing up for what they thought would be a short and glorious war—they were, of course, mistaken.

In English, the children have read poems such as “In Flanders Field” by Colonel John McCrae and had a go at writing their own verse from the perspective of a soldier.



Convention on the Rights of the Child
Article 29: Goals of Education



Convention on the Rights of the Child
Article 29: Goals of Education



Year Two Authors

Recently, Y2 parents came in to school to hear their children read aloud stories they had written. It was lovely to see families sharing learning like this.



This week in a frosty forest school, groups of students of all ages were getting in the festive spirit. Our task for the week was to make a Christmas tree decoration. The children were tasked with using a bow saw, named for its resemblance to a bow and arrow, to cut a felled branch into a thin slice. Once they had their cookie shaped piece, they used a hand drill to make a small hole. After passing a pipe cleaner through to make a loop, they were ready to decorate!



Forest School

Using tools is a brilliant experience for young children. Not only do they provide the students with a practical skill for life, they're also brilliant for developing hand strength - using a saw and hand drill can be really hard work when you're as young as 6! Improving fine motor skills is a key objective of our forest school program, as they are crucial for handwriting and typing .

The overarching aim of forest school is to show children that being outdoors is a fantastic way to manage their emotions. Studies have shown that simply spending time outside; and seeing the colour green can improve your mental health. Woodwork is also a very therapeutic activity, as concentrating on a simple, manual task quiets the mind and acts as a form of mindfulness. Furthermore, being able to produce something yourself brings a sense of pride and achievement, which is important for improving self-confidence .



Convention on the Rights of the Child

Article 29: Goals of Education

Christmas Performances



**You are warmly invited to attend your child's
Christmas performance in the main school hall:**

Reception Nativity, Wednesday 4th December at 9.30am.

Refreshments available after the show.

Y1/2 carol concert, Wednesday 11th December at 9.30am.

Y3/4 carol concert, Thursday 12th December at 2.15pm.

Y5/6 carol concert, Friday 13th December at 2.15pm.

SYDENHAM PRIMARY PTA
PRESENTS THE RETURN
OF OUR:

Present Wrap Room

13th, 16th & 17th of December



During school hours your child will be
taken to choose their grown up a
surprise gift which they will wrap and
decorate!



£3 per gift - max 2 gifts per child

Available on Parent Pay from Monday

VOLUNTEERS NEEDED!

If you are able to help with
either a morning or afternoon
slot

9:00-12:30 or 1:00-3:20

please let us know

sydenhampta@welearn365.com

CHRISTMAS JUMPER COLLECTION

**Do you have any outgrown or unwanted
Seasonal or Christmas jumpers?**

**Drop them at the collection box in the school office!
Children's & Adults sizes are welcomed.**



**We will hold a jumper sale before the holidays, all
proceeds go to the PTA to help fund new resources
for school.**

**Festive drinks & snacks will also be available,
more details to come!**

Grab a bargain & help reduce clothing waste !



Please donate clean, re-sellable items



FREE books for your school when you buy at the Book Fair!

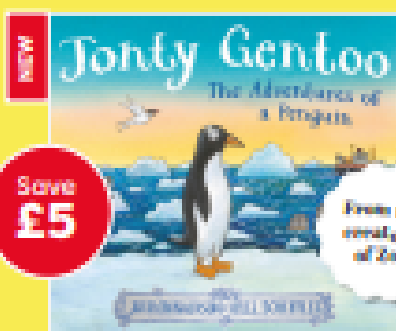
SCHOLASTIC TRAVELLING BOOKS

A pop-up book-store with hundreds of books from just £2.99

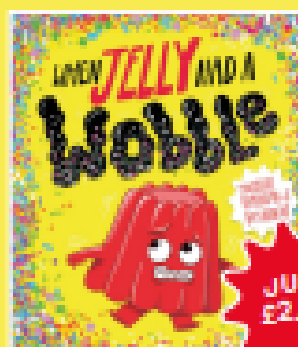
COME to the BOOK FAIR



~~£12.99~~ £9.99



~~£12.99~~ £7.99



~~£6.00~~ £2.99



£8.99



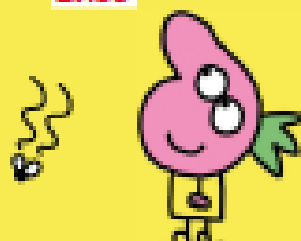
£7.99



£7.99



A work of staggering importance.



Monday 25th—Thursday 28th November from 3.30 –3.45pm in the main hall. All children accompanied by an adult, please.

Cashless payments accepted.

Scan the QR code to pay online!



A cartoon illustration of a chef with a white hat and a red and white striped shirt, sitting in a red sleigh with yellow runners. The sleigh is decorated with white snowflakes.

Christmas Lunch

Roast Turkey
Cocktail Sausage, Stuffing Ball with
Gravy (G.SU)

or

(vg) Roast Quorn Fillet, Veggie Sausage,
Stuffing Ball with Gravy (G)

Served with Crispy Roast Potatoes, Garden
Peas, and Sliced Carrots

(vg.h) Christmas Cracknel (G.SU)

or

(vg.h) Christmas Shortbread(G)

Christmas lunch will be on Tuesday
10th December. The office will be
contacting parents and carers soon to
explain how you can sign your child
up for the special lunch.

A cartoon illustration of a nurse with blonde hair, wearing a red Santa hat, glasses, and a white lab coat. She is holding a red and white striped candy cane.

Allergen Key
V - Vegetarian
VG - Vegan
D - Dairy
G - Gluten
SB - Soya
SU - Sulphites
H - Homemade



Attend Today, Achieve Tomorrow








Getting Your Child to School Really Matters



Did You Know... ?

In a School Year, If Your Child is Late Every Day By...	Your Child Would Have Lost Approximately...	or They Would Have Missed Approximately...
5 Minutes	3.5 Days from School	20 Lessons
10 Minutes	7 Days from School	41 Lessons
15 Minutes	10 Days from School	55 Lessons
20 Minutes	14.5 Days from School	82 Lessons
30 Minutes	22 Days from School	123 Lessons

Please Encourage Punctuality to Maintain Attendance

<p>190 DAYS 100%</p>  <p>Very best chance of success</p>	<p>183 DAYS 96%</p>  <p>Off to a flying start</p>	<p>179 DAYS 94%</p>  <p>Less chance of success</p>	<p>175 DAYS 92%</p>  <p>Harder to make progress</p>	<p>More than 18 days absence less than 90%</p>  <p>Persistent Absentee (Not fair on your child)</p>
---	--	---	---	--

ABSENCE = LOST OPPORTUNITY



Did You Know... ?

If Your Child's Attendance During the School Year...	Your Child Would Have Lost Approximately...	or They Would Have Missed Approximately...
was 95%	9 Days from School	50 Lessons
was 90%	19 Days from School	100 Lessons
was 85%	29 Days from School	150 Lessons
was 80%	38 Days from School	200 Lessons
was 75%	48 Days from School	250 Lessons

Getting Your Child to School Really Matters

onside[®]
COACHING.CO.UK

THE **PERFECT**
Holiday Childcare Solution

Ages
5-11

Christmas Camp!

ONLY
£20 per
day



Thursday 2nd &
Friday 3rd January 2025

COURSE TIMES
9.30am to 3.30pm

Early Drop off Late Pick up
8.30 to 9.30am 3.30 to 4.30pm

+£3.50
Each

WL Woodloes

Woodloes Primary School
Deansway, Woodloes Park, Warwick, CV34 5DF

Book now at **onsidecoaching.co.uk**

onside[®]
COACHING.CO.UK

THE **PERFECT**
Holiday Childcare Solution

Ages
5-11

Christmas Camp

HAF

Active Kids



COURSE TIMES 9.30am to 3.30pm

CHRISTMAS

2nd & 3rd
January 2025

**HEALTHY
LUNCH
PROVIDED**

**2 DAYS
FREE**

WL Woodloes

Woodloes Primary School
Deansway, Woodloes Park, Warwick, CV34 5DF

For more information go to

haf.onsidelive.co.uk

Diary Dates

Monday 25th November	YR trip to Compton Verney.
Monday 25th November	Nasal flu vaccinations.
Monday 25th November	Book Fair from 3.30—3.45pm in the main hall (ends on Thursday 28th November.)
Tuesday 26th November	YR and Y6 height and weight checks.
Tuesday 26th November	KS1 Family Learning session, 1.50—3.20pm
Wednesday 27th November	Y3 and Y4 visit the Belgrade Theatre to watch “Dick Whittington.” pantomime, “Dick Whittington.”
Thursday 28th November	Y5 and Y6 visit the Belgrade Theatre to watch Dick Whittington.
Thursday 28th November	Emotion Coaching workshop for Reception parents, 2.15—3.15pm.
Thursday 28th November	Christmas decorations go up in the hall.
Friday 29th November	Black Hole Planetarium comes to school for Y1.
Friday 29th November	MUFTI (non-uniform) Day. If your child wears their own choice of clothes, please donate at least 50p via ParentPay. All money raised will support the local charity, Parenting Project.

Diary Dates

Diary Dates

Monday 2nd December	School closed for INSET (In-Service training.) Children back at school on Tuesday 3rd December.
Wednesday 4th December	Reception Nativity at 9.30am. Families are warmly invited to attend.
Monday 9th December	YR, Y1 and Y2 visit Warwick Arts' Centre to watch "The Smeds and The Smoos."
Tuesday 10th December	Christmas lunch.
Wednesday 11th December	KS1 Christmas concert at 9.30am.
Thursday 12th December	Y3/4 Christmas concert at 2.15pm.
Thursday 12th December	Y6 visit to St Mary's church.
Friday 13th December	Y5/6 Christmas concert at 2.15pm.
Monday 16th December	Rock Steady concert at 2.15pm.
Tuesday 17th December	Winter Craft session—sign up via Parent Pay.
Friday 20th December	Christmas MUFTI—come to school in a festive jumper or outfit. If your child wears their own choice of clothes, please donate at least 50p via ParentPay. All money raised will support the local charity, Parenting Project.
Monday 23rd December—Friday 3rd January, school closed for the Christmas holiday.	
Monday January 6th 2025, School closed for INSET (In Service Training.)	
Children return to school on Tuesday 7th January 2025	

Diary Dates



Sydenham Superstars



YR and Key Stage One

See you on Monday.
Best wishes from Miss
Glenny



Key Stage Two